



**Being a marine
scientist at**

WWF

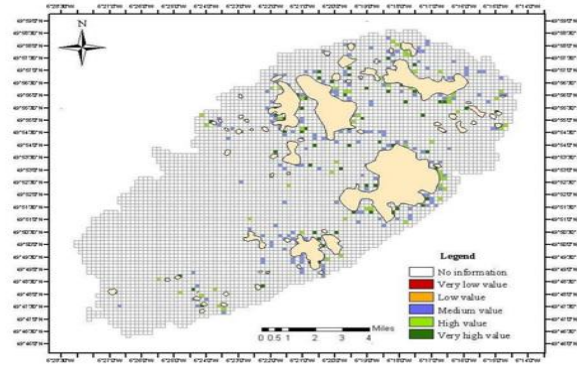
06/12/2018

Sarah Vanden Eede

Educatio



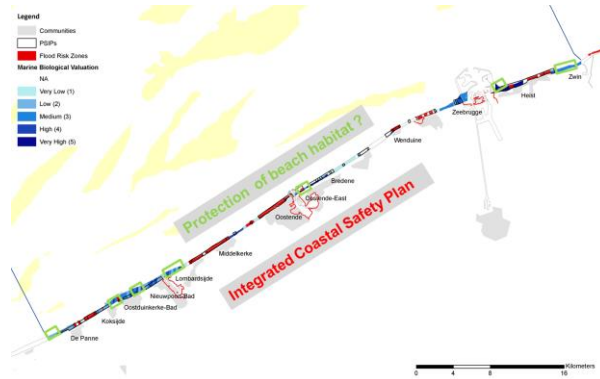
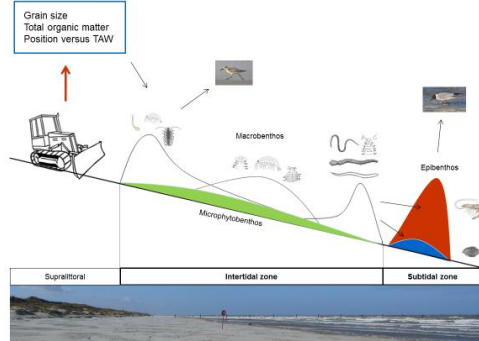
KU LEUVEN



PhD



What is the impact of coastal defense on the beach ecosystem?



Jobs



F | M
FULL MARKS



OCEANS

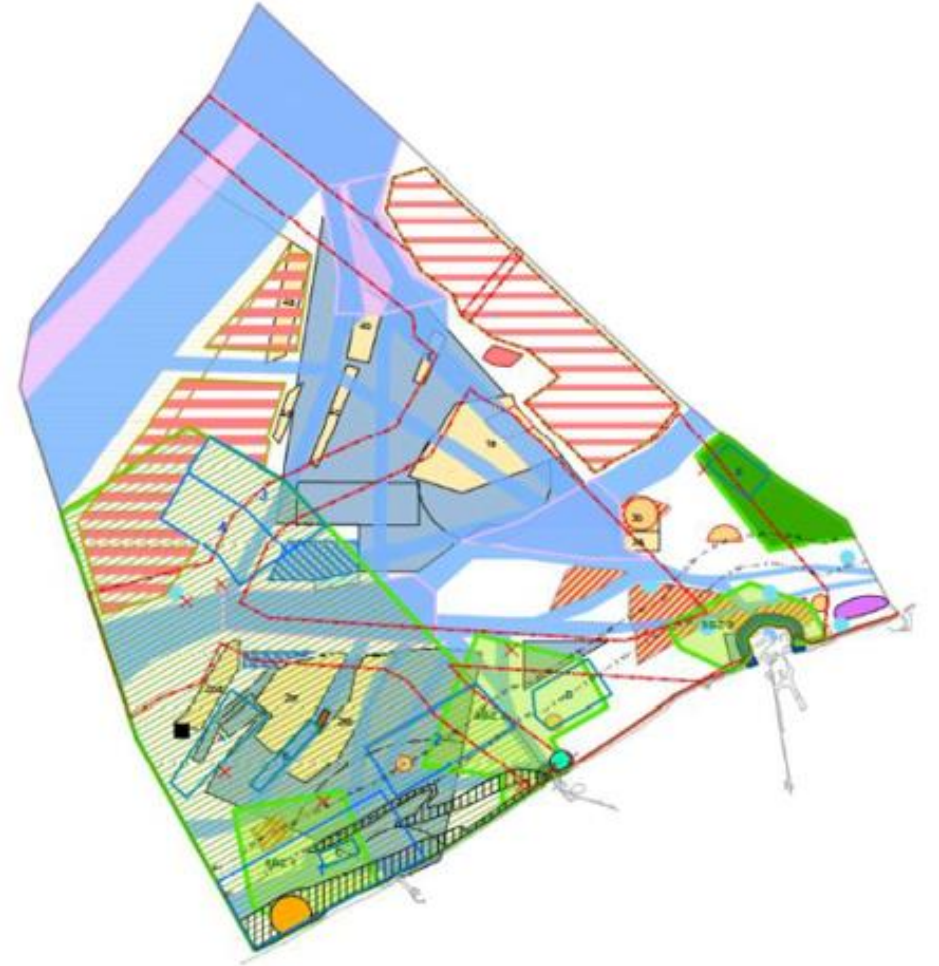
All marine, coastal, sea, ocean, saltwater related topics, including:

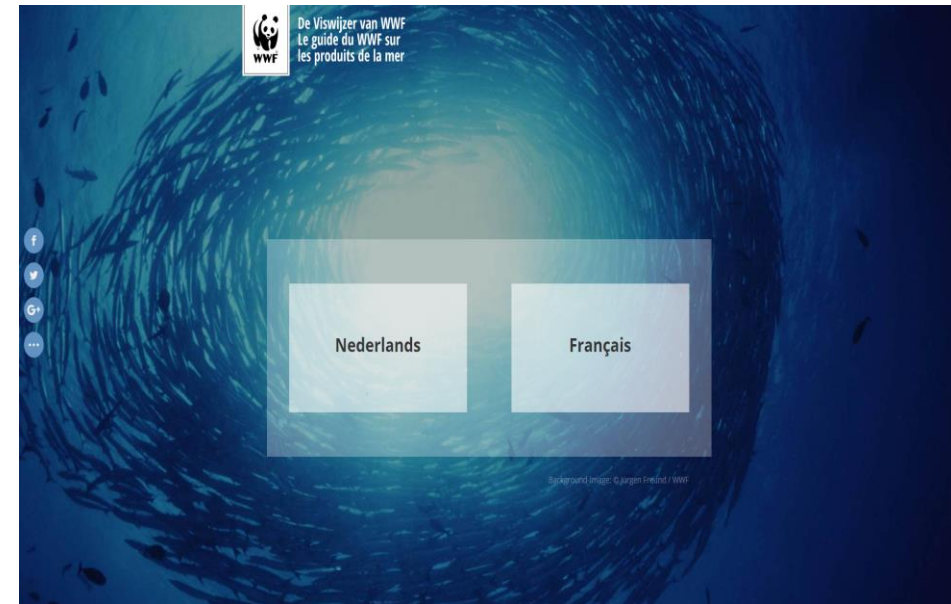
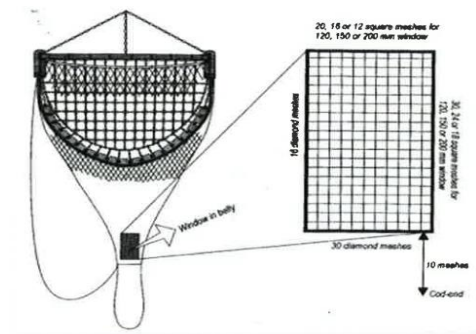
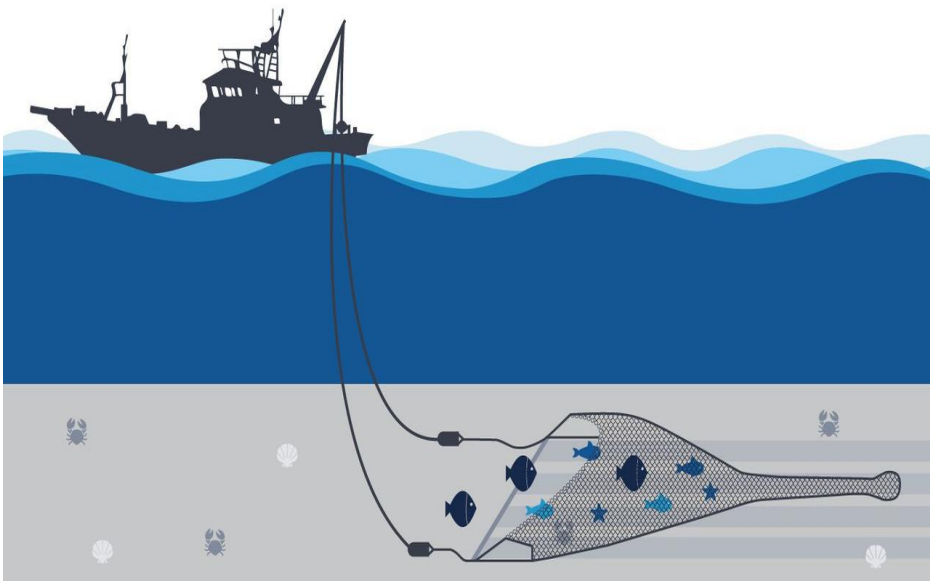
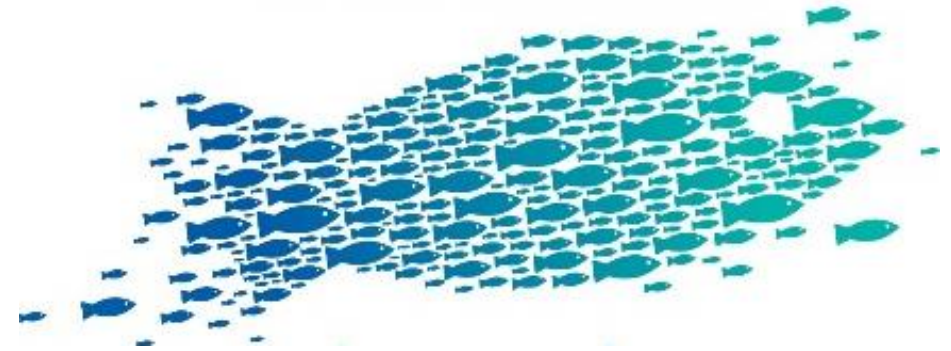
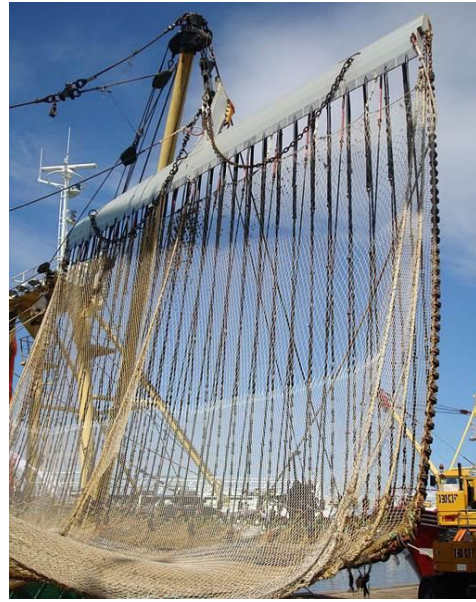
- North Sea
- Marine spatial planning
- Marine protected areas
- Deep sea mining
- Marine environmental legislations
- Fisheries & aquaculture
- Sustainable fishing techniques
- Sustainable seafood
- ASC & MSC
- Seafood / Fish Guide

✉ sarah.vandeneede@wwf.be
☎ +32 2 340 09 31
☎ +32 498 42 18 09

Sarah











© WWF®

International – EPO – Belgium



OCEANA



SEAS AT RISK

**Thanks
for your
attention!
!!**

