



ROYAL MUSEUM FOR CENTRAL AFRICA
AFRICAMUSEUM

OORI
5.12.2018
Guido Gryseels

AFRICA
museum

ORIGIN

- ✓ 1897 - World Fair (Palace of the Colonies)
- ✓ 'Musée du Congo' founded in 1898 by King Leopold II
- ✓ exhibition of scientific objects and studies
- ✓ promotional activities
- ✓ initial project much more complex
- ✓ 1960: Royal Museum for Central Africa



Inauguration of the museum building by King Albert I 30 April 1910



MISSION STATEMENT

The Museum is a world centre in research and knowledge dissemination on past and present societies and natural environments of Africa, and in particular Central Africa, to foster – to the public at large and the scientific community – a better understanding and interest in this area and, through partnerships, to substantially contribute to its sustainable development.

Federal scientific institution



ACTIVITIES

- Collection management
- Research (anthropology, history, biology, earth sciences) and valorisation of results
- Public services
- Dissemination of knowledge / exhibitions
- Sensitisation
- Reinforce national capacities in Africa





**Federal Scientific Institute
Campus RMCA
7 buildings (50.000 m²)**

History,
Publications

Stanley Pavilion
(history)

Director's pavilion

Museum

CAN
(human science
collection management
biology, public service
scientific collection)

Entrance pavilion

Palace of the colonies
(earth sciences, biology,
archaeology, scientific
collections)

Some figures

- ✓ 250 members of staff
- ✓ 60 volunteers
- ✓ 85 scientists
- ✓ 150 PhD students and trainees
- ✓ Budget of 17 mio euro / year





HUMAN SCIENCES

Cultural Anthropology and History

Culture & Society

Archives & collection management

History & Politics

Heritage Studies

Collection management:
only 1% on display

- ✓ 125 000 ethnographic objects
- ✓ 8 000 musical instruments
- ✓ archives of H.M. Stanley
- ✓ 1 000 000 photos and films

AFRICA
museum

Linguistics and ethnomusicology



Inkoranya
y'ikinyarwaanda
DICTIONNAIRE
RWANDA - RWANDA
RWANDA - FRANÇAIS
mu kinyarwaanda
no mu gifaraansa

Inkoranya y'ikinyarwaanda DICTIONNAIRE RWANDA - RWANDA ET RWANDA - FRANÇAIS mu kinyarwaanda no mu gifaraansa

A. Coupey, Th. Kamanzi, S. Bizimana, G. Sematama,
G. Rwabukumba, C. Ntazinda et collaborateurs

A - H

A - H

Inkoranya
y'ikinyarwaanda
DICTIONNAIRE
RWANDA - RWANDA
RWANDA - FRANÇAIS
mu kinyarwaanda
no mu gifaraansa

Inkoranya y'ikinyarwaanda DICTIONNAIRE RWANDA - RWANDA ET RWANDA - FRANÇAIS mu kinyarwaanda no mu gifaraansa

A. Coupey, Th. Kamanzi, S. Bizimana, G. Sematama,
G. Rwabukumba, C. Ntazinda et collaborateurs

I - P

I - P

Inkoranya
y'ikinyarwaanda
DICTIONNAIRE
RWANDA - RWANDA
RWANDA - FRANÇAIS
mu kinyarwaanda
no mu gifaraansa

Inkoranya y'ikinyarwaanda DICTIONNAIRE RWANDA - RWANDA ET RWANDA - FRANÇAIS mu kinyarwaanda no mu gifaraansa

A. Coupey, Th. Kamanzi, S. Bizimana, G. Sematama,
G. Rwabukumba, C. Ntazinda et collaborateurs

R - Z

R - Z

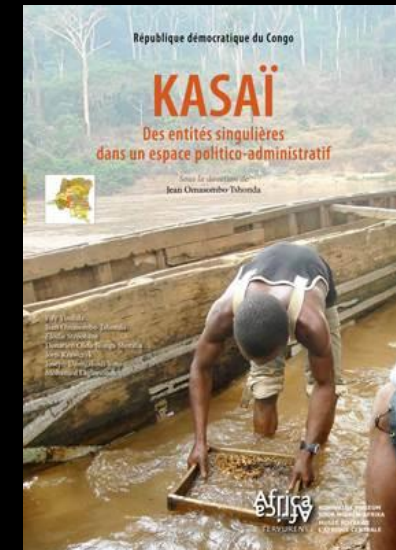
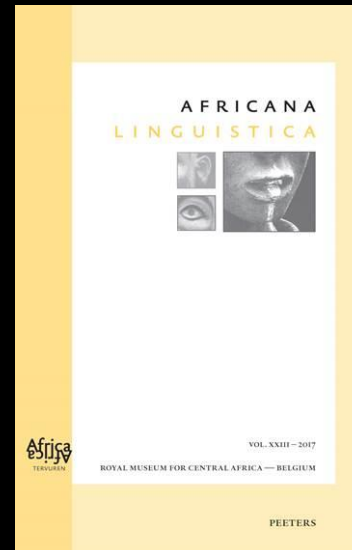
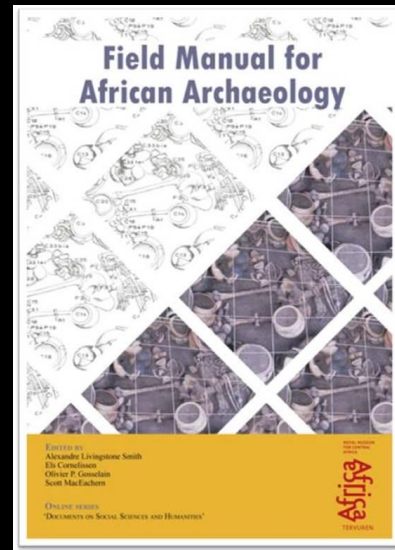
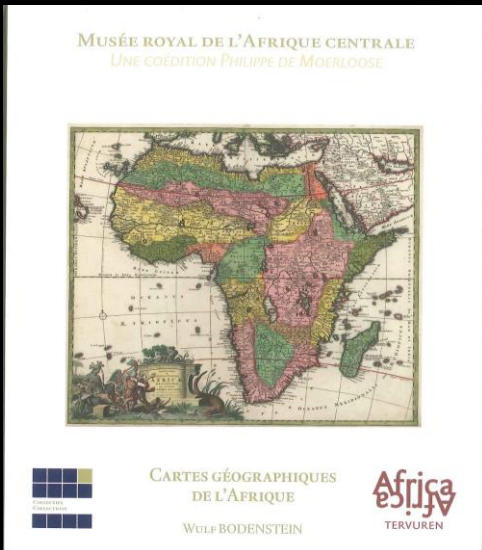
Scientific Research – HUMAN SCIENCES

Collections of the RMCA: *Exploring Africa with ancient maps & Virunga. Archives et collections d'un parc national d'exception*

Field Manual of African Archaeology

Africana Linguistica

“Provinces” project: *Kasaï*



A detailed close-up photograph of a fly's head, showing its large compound eyes, antennae, and mouthparts. The fly is light brown with many long, dark hairs. The background is a soft, out-of-focus grey.

NATURAL SCIENCES

Biology

Vertebrates

Invertebrates

Wood biology

**Biological collection and
data management**

- ✓ 10 000 000 zoological specimens
- ✓ 56 000 tropical wood samples

Scientific Research – BIOLOGY

Exploration and conservation of the invertebrates biodiversity of the Monts Nimba, Guinea – Taxonomy and distribution of spiders





Scientific Research – BIOLOGY

Tracing of wood
growth in
DR Congo, Luki

Scientific Research – BIOLOGY

MEMO: Monitoring of Exotic Mosquitoes in Belgium



Aedes japonicus

©ecdc.europa.eu





African Biodiversity Information Centre visits



NATURAL SCIENCES

Earth Sciences

Geodynamics and mineral resources

Natural risks

Surface environments

Collection management

PROMINES

- ✓ 15 000 rock samples and minerals
- ✓ 300 000 aerial photographs



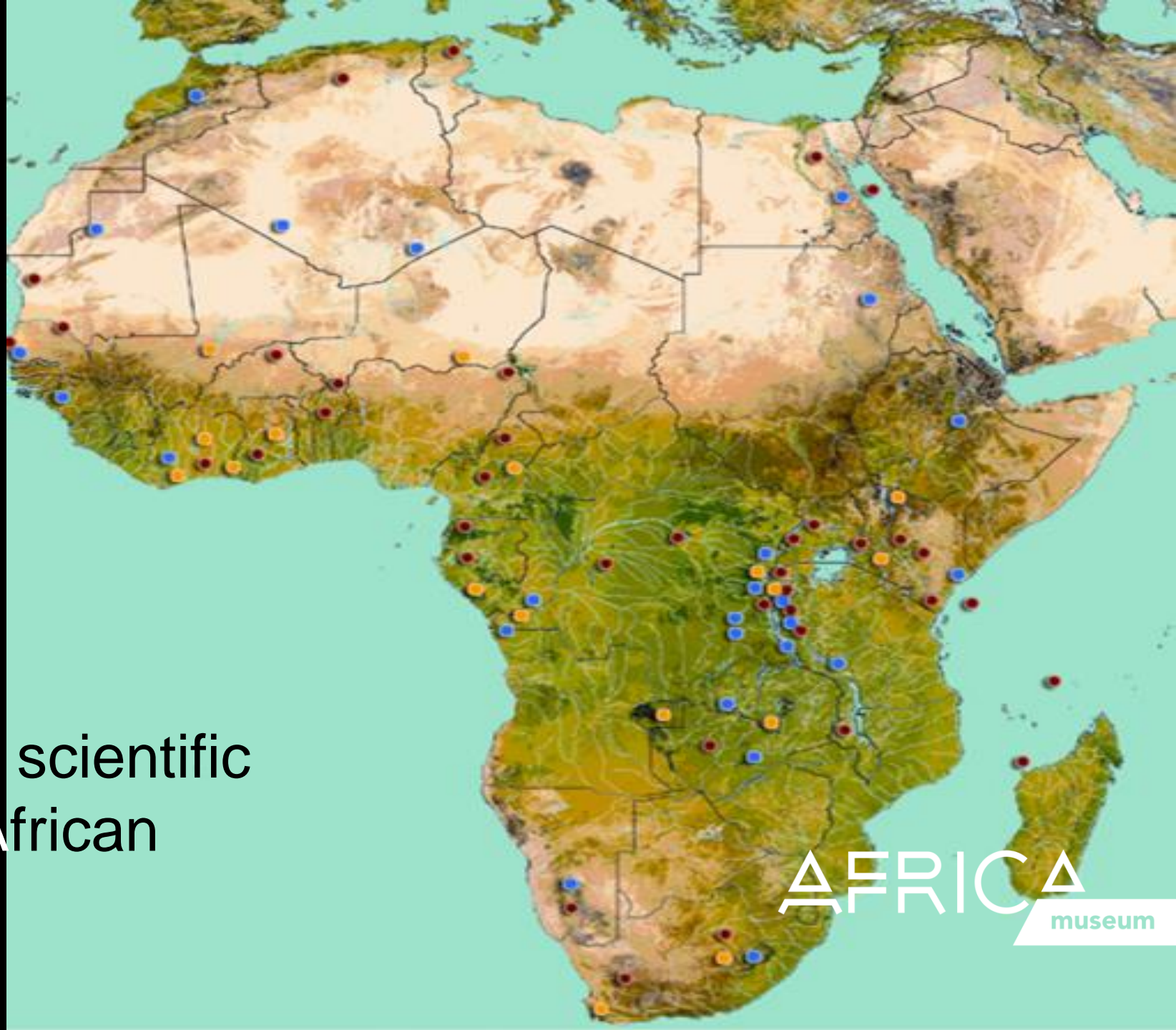
Early warning system

Virunga volcanoes

The combined use of Ground-Based and Remote Sensing techniques as a tool for volcanic risk and health impact assessment for the Goma region

(North Kivu, Democratic Republic of Congo)

The RMCA conducts scientific research in several African countries





DIGITISATION

TMS, GNOSIS, DEKKMMA, Cartography, photographers

COFFRET EN BOIS CONTENANT 150 FILMS TOURNES AU CONGO ET EN RUANDA-URUNDI ENTRE 1912 ET 1960

The Museum System

THE MUSEUM SYSTEM GALLERY SYSTEMS

Theorizur Configuratio Taal Info Afsluiten

	Objecten		Personen en Instellingen		Media
	Tentoonstellingen		Bruiklenen		Verzendingen
	Literatuur		Gebeurtenissen		Vindplaatsen
	Verzekeringen		Transacties		

RDCphoto

Accueil | Dernières modifications | Recherche | Ajout d'une photo | Messages | Statistiques | Admin

Bienvenue sur la base de données des collections photographiques de la RDC.

Derniers messages

2007-07-03 11:33:44 françois [Bonjour Hein, j'ai bien reçu ton Mail et je t'en remercie. Comme tu le devine bien, cette...](#)

2007-06-11 12:12:33 laetitia [Chers amis, Comme vous avez pu vous en rendre compte, de nouvelles améliorations ont ét...](#)

Un chabotier sur le Lac Tanganyika (coll. ARNACO)

La base de données RDCphoto, qui a vu le jour en janvier 2007, ambitionne de rassembler un nombre important d'archives photographiques congolaises et de les mettre, dans un futur proche, à disposition d'un large public, constitué de spécialistes et de chercheurs, mais également d'étudiants, de visiteurs avertis et de simples curieux. Actuellement, les collections de quatre grands instituts nationaux sont progressivement mises en ligne. Les Archives nationales du Congo (ARNACO), la Bibliothèque Nationale du Congo (BNC), la Radio Télévision Nationale Congolaise (RTNC) et l'Institut des Musées nationaux du Congo (IMNC) sont en effet les dépositaires d'un patrimoine photographique qui remonte à l'époque coloniale et qui s'est enrichi au fil des années. Ces collections sont aujourd'hui extrêmement diversifiées et abordent différents aspects du pays, à travers son histoire complexe et mouvementée.

Un grand nombre de thématiques sont donc évoquées par ces images, qui se rapportent aussi bien à la nature, la culture, la vie quotidienne, aux ressources économiques et à l'exploitation industrielle qu'à l'éducation et aux soins de santé, à la vie politique et à certains événements marquants.

A côté des images en tant que telles, ce sont autant de données s'y rapportant qui sont enregistrées dans la base de données et garantissent un accès complet et primordial à l'information liée aux collections.

Les exemples ci-contre, parmi les quelques milliers de photos qui devraient enrichir la base de données, témoignent d'un passé riche et complexe et participent de la mémoire visuelle de la RDC. En effet, outre un intérêt historique évident, les collections numérisées dans le cadre du projet RDCphoto représentent avant tout un patrimoine inestimable qu'il importe de sauvegarder et de transmettre aux générations futures.

[En savoir plus sur le projet RDCphoto >>>](#)

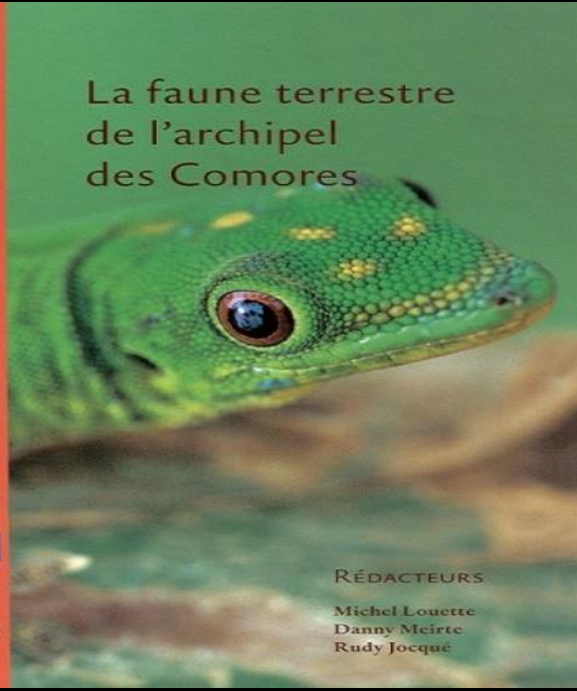
Présentation de la nouvelle tenue de la Garde Républicaine au Président Kasavubu en 1962 (coll. RTNC)





DISSEMINATION OF KNOWLEDGE

- Educational activities
- Cultural activities
- Website
- Publications
- Temporary exhibitions



La faune terrestre de l'archipel des Comores

RÉDACTEURS

Michel Louette
Danny Meirte
Rudy Jocque

KONINKLIJK MUSEUM VOOR MIDDEN-AFRIKA
Afrika
TERVUREN

HOME

- MUSEUMBEZOEK
- WIE ZIJN WIJ?
- COLLECTIES
- ONDERZOEK
- ONDERWIJS
- STEUN ONS
- RENOVATIE



Ingeblikte museumblikken

Home

HOME

Contact

KMMA nieuwsbrieven

RSS feeds

AUGUSTUS 2013

Ma	Di	Wo	Do	Vr	Za	Zo
			1	2	3	4
5	6	7	8	9	10	11
12	13	14	15	16	17	18
19	20	21	22	23	24	25
26	27	28	29	30	31	

Koninklijk Museum voor Midden-Afrika



WETENSCHAP IN DE KIJKER
Back from Africa: Alex Gumovsky



TIJDELIJKE TENTOONSTELLINGEN

TDWG conferentie 2013 : 28 oktober - 1 november 2013 in Firenze (Italië)

Oproep tot digitaliseren van (meta)data over biodiversiteit en ecologie van Sub-Saharisch Afrika : Opreep CABIN 2013

Artikel over West-Afrikaanse fruitvliegen in EJT: Met beschrijving van een nieuwe soort

NIEUWS

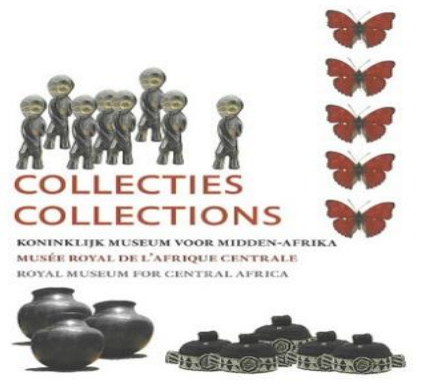
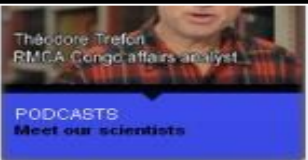
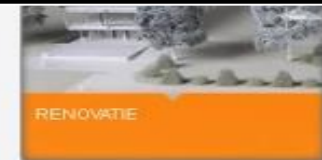
Dissemination of knowledge

Publications & website

Audiovisueel project Ingeblikte museumblikken

Parcours 'De schatten van Vlieg - 2013'

KMMA
Leuvensesteenweg 13
3080 Tervuren - België
Tel: +32 (0) 3 769 43 44

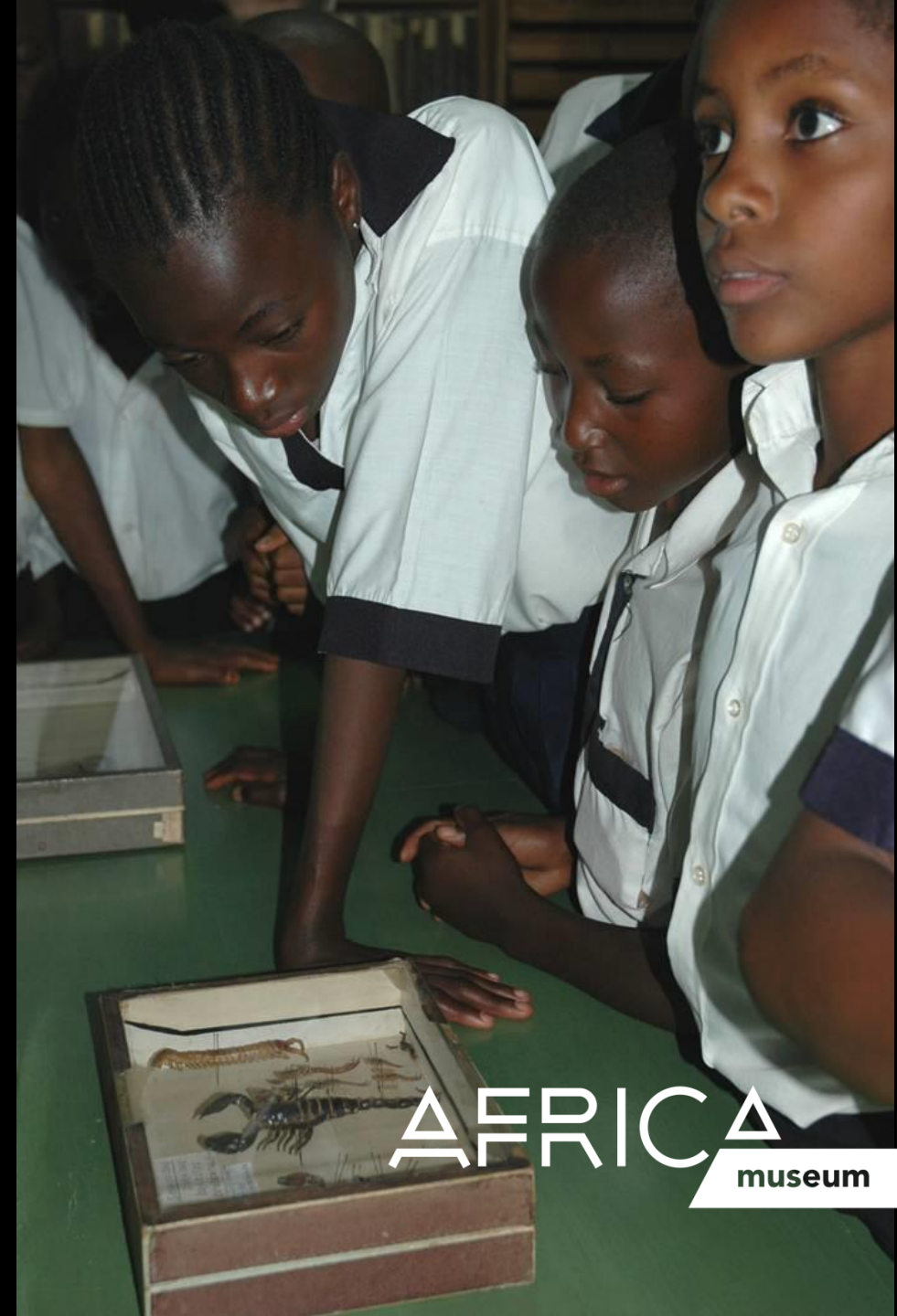


**BETWEEN 130.000 AND 300.000 VISITORS
30.000 CHILDREN / SCOLARS IN WORKSHOPS**

AFRICA
museum

Partnerships with African Institutions

- strengthening national capacities
- conservation of cultural and natural heritage
- scientific collaboration
- educational workshops
- training
- sharing of data and documentation
- D4D Prize



AFRICA
museum

WHY RENOVATION IS NECESSARY?

THE RENOVATION PROJECT



Permanent exhibition still
has colonial spirit



THE MUSEUM AS WE KNOW IT



IT HAD TO CHANGE ITS SCENOGRAPHY

AFRICA
museum



Multicultural society :

- The RMCA is the most important '*lieu de mémoire*' for Belgium's colonial past
- The RMCA must become a window to contemporary Africa and its history
- The RMCA must become a meeting point for Belgians and members of the 'source communities' whose patrimony is found in the RMCA

New role for the RMCA : redefinition

HOW?

New role for RMCA: process of redefinition

Exit Congo (2001): origin of collections



New role for RMCA: process of redefinition Memory of Congo. The colonial era (2005)



New role for RMCA: process of redefinition

Commitment Source Communities

Indépendance! (2010)

Congolese stories about 50 years of independence



Commitment Source Communities

Creation of **COMRAF**

READ-ME (Réseau européen des Associations de Diasporas et Musées d'Ethnographie)

- projects / colloquia / exhibitions

RIME (Réseau international de Musées ethnographiques)

SWICH (Sharing a World of Inclusion, Creativity and Heritage)

Groupe des six



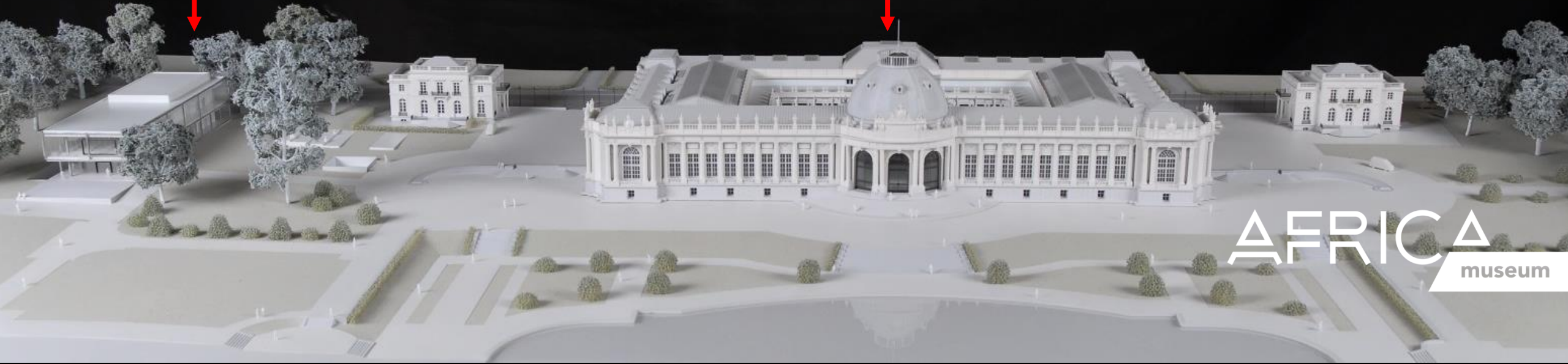
OBJECTIVE

The RMCA is a dynamic museum equipped with all modern facilities. It encourages the interdisciplinary knowledge of people, cultures, societies, history and natural resources in Africa as well as the sustainable development in the region.

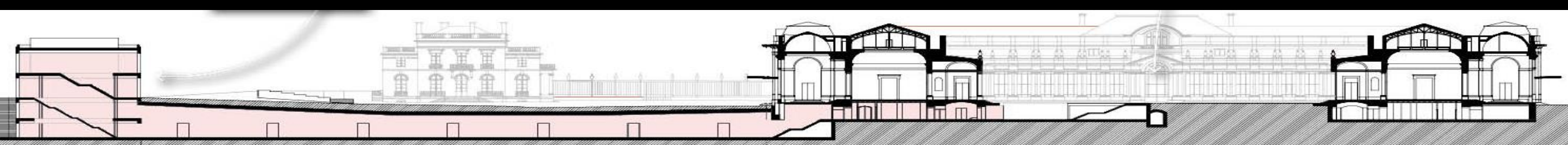
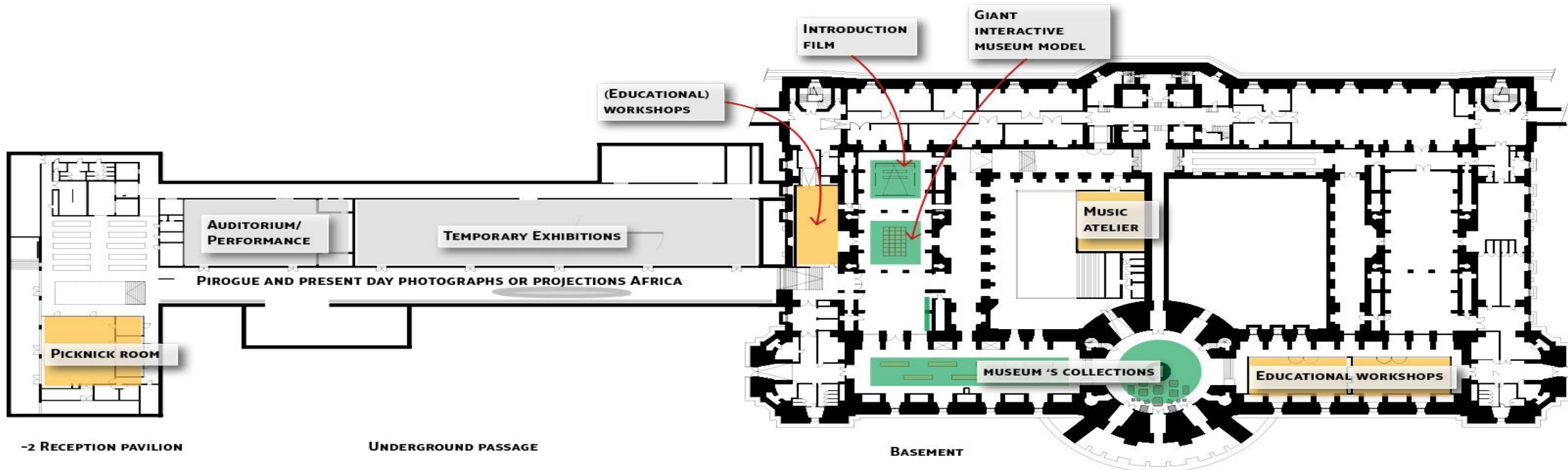
Ambition: 250.000 visitors per year



Modernize, restore and adapt to the 21st century

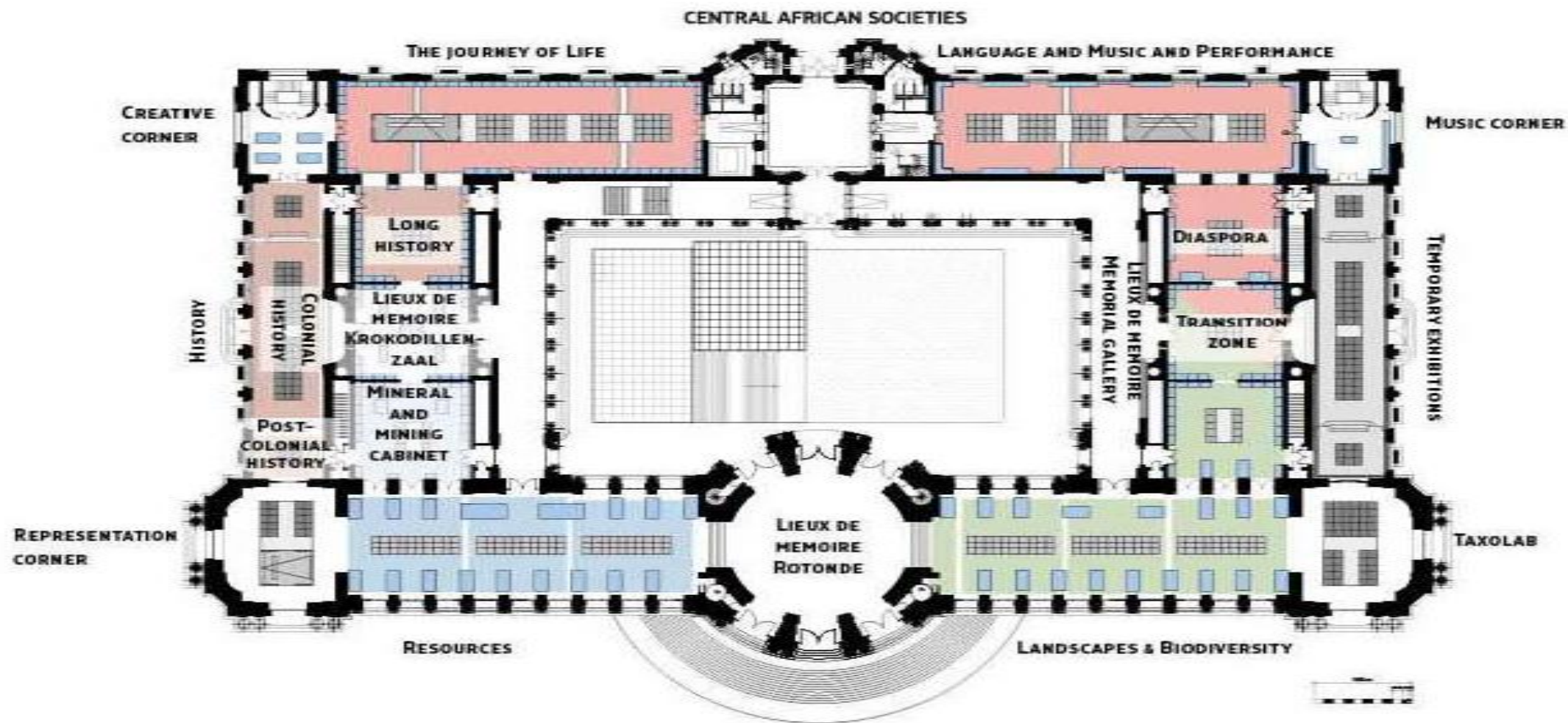


AFRICA
museum



New reference exhibition / floor -1

New reference exhibition / ground floor



- > focus on Central Africa
- > from a contemporary perspective
- > thematic



More modern than ever

AFRICA
museum



More authentic than ever

AFRICA
museum



A renewed permanent exhibition
(focus on contemporary Africa - culture)

Scenography – Diaspora





Interactive experiences

AFRICA
museum

**What's
new?**

New permanent exhibition

Doubling public spaces

Complete accessibility

Energy saving

Multilingual

New temporary exhibition halls with climate control, and auditorium

Systematic use of audiovisual media

Contemporary Art



guido.gryseels@africamuseum.be